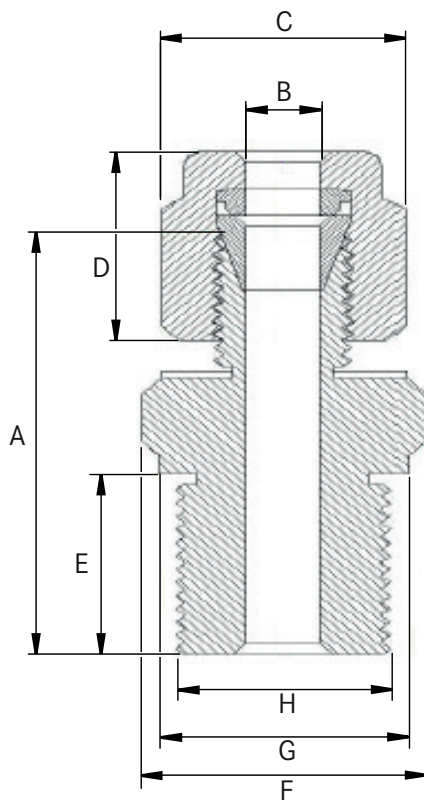


**EPIC® SENSORS G INCH**

**Compression fitting**

**Features**

- G thread is equivalent to BSPP thread
- parallel pipe threads
- compression fitting will allow tight process fitting without additional welding process for pipe like structures
- nearest metric equivalent may be used for C and F hex flats
- single ferrule (CPI type) will be used upto 2 mm ØOD tube, from 3 mm ØOD tube and onward double ferrule structure will be used.



B [in] Tube OD	H [in] G Thread	C [in] Nut	D [mm]	A [mm]	E [mm]	F [in] Body	G [mm]
1/8"	1/8"	7/16"	12,0	23,2	7,1	9/16"	13,8
3/16"	1/8"	1/2"	12,0	24,1	7,1	9/16"	13,8
1/4"	1/8"	9/16"	12,7	25,7	7,1	9/16"	13,8
1/8"	1/4"	7/16"	12,0	28,1	11,2	3/4"	18,2
3/16"	1/4"	1/2"	12,0	29,0	11,2	3/4"	18,2
1/4"	1/4"	9/16"	12,7	30,0	11,2	3/4"	18,2
5/16"	1/4"	5/8"	13,5	31,2	11,2	3/4"	18,2
3/16"	3/8"	1/2"	12,0	30,4	11,1	7/8"	21,7
1/4"	3/8"	9/16"	12,7	31,2	11,2	7/8"	21,4
5/16"	3/8"	5/8"	13,5	32,1	11,1	7/8"	21,7
3/8"	3/8"	11/16"	14,2	32,2	11,2	7/8"	21,4
1/2"	3/8"	7/8"	17,5	32,4	11,2	7/8"	21,4
1/18"	1/2"	7/16"	12,0	35,6	14,2	1.1/16"	25,8
3/16"	1/2"	1/2"	12,0	36,5	14,2	1.1/16"	25,8
1/4"	1/2"	9/16"	12,7	37,5	14,2	1.1/16"	25,8
5/16"	1/2"	5/8"	13,5	38,2	14,2	1.1/16"	25,8
3/8"	1/2"	11/16"	14,2	38,7	14,2	1.1/16"	25,8
1/2"	1/2"	7/8"	17,5	38,9	14,2	1.1/16"	25,8
1/8"	3/4"	7/16"	12,0	39,6	16,0	1.1/4"	31,0
3/16"	3/4"	1/2"	12,0	40,5	16,0	1.1/4"	31,0
1/4"	3/4"	9/16"	12,7	41,5	16,0	1.1/4"	31,0
5/16"	3/4"	5/8"	13,5	42,2	16,0	1.1/4"	31,0
3/8"	3/4"	11/16"	14,2	42,2	16,0	1.1/4"	31,0
1/2"	3/4"	7/8"	17,5	42,2	16,0	1.1/4"	31,0
5/8"	3/4"	1.1/16"	17,5	42,2	16,0	1.1/4"	31,0
3/4"	3/4"	9/8"	17,5	42,5	16,0	1.1/4"	31,0
1/8"	1"	7/16"	12,0	40,8	18,2	1.5/8"	40,5
3/16"	1"	1/2"	12,0	41,7	18,2	1.5/8"	40,5
1/4"	1"	9/16"	12,7	42,2	18,2	1.5/8"	40,5
5/16"	1"	5/8"	13,5	43,4	18,2	1.5/8"	40,5
1/2"	1"	7/8"	17,5	43,4	18,2	1.5/8"	40,5
3/4"	1"	9/8"	17,5	43,7	18,2	1.5/8"	40,5
1"	1"	1.1/2"	20,5	47,8	18,2	1.5/8"	40,5