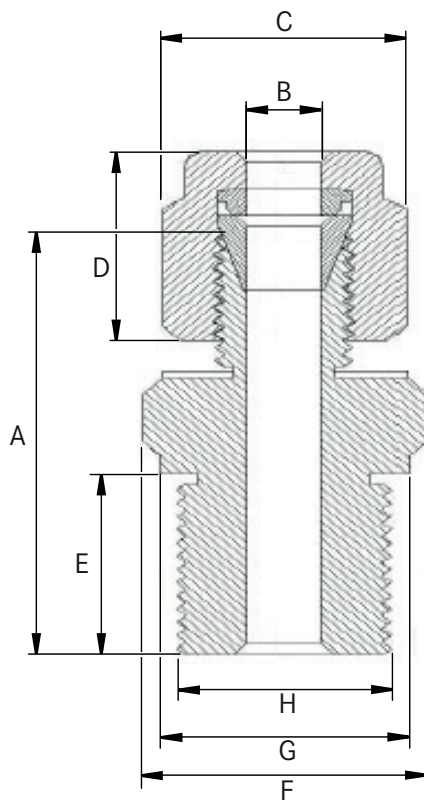


EPIC® SENSORS METRIC MM

Compression fitting

Features

- parallel pipe threads
- compression fitting will allow tight process fitting without additional welding process for pipe like structures
- nearest metric equivalent may be used for C and F hex flats
- single ferrule (CPI type) will be used upto 2 mm ØOD tube, from 3 mm ØOD tube and onward double ferrule structure will be used.



B [mm] Tube OD	H Metric Thread	C [in] Nut	D [mm]	A [mm]	E [mm]	F [in] Body	G [mm]
1	M6x1	5/16"	8,0	22,0	7,5	9/16"	13,6
1,5	M6x1	5/16"	8,0	22,0	7,5	9/16"	13,6
2	M6x1	5/16"	8,0	21,0	7,5	9/16"	13,6
1	M8x1	5/16"	8,0	22,0	7,5	9/16"	13,6
1,5	M8x1	5/16"	8,0	22,0	7,5	9/16"	13,6
2	M8x1	5/16"	8,0	21,0	7,5	9/16"	13,6
4	M8x1	1/2"	12,0	25,0	7,5	9/16"	13,6
4,5	M8x1	1/2"	12,0	25,0	7,5	9/16"	13,6
3	M10x1	7/16"	12,0	27,5	11,0	11/16"	16,5
6	M10x1	9/16"	12,7	29,0	11,0	11/16"	16,5
5,5	M12x1	9/16"	12,7	29,0	11,0	11/16"	16,3
6	M12x1	9/16"	12,7	29,0	11,0	11/16"	16,3
8	M12x1	5/8"	13,5	30,0	11,0	11/16"	16,3
3	M14x1,5	7/16"	12,0	27,0	11,0	3/4"	18,2
9	M14x1,5	11/16"	14,2	30,0	11,0	3/4"	18,2
6	M16x1,5	9/16"	12,7	28,5	11,0	7/8"	21,4
6	M18x1,5	9/16"	12,7	28,5	11,0	7/8"	21,4
1,5	M20x1,5	5/16"	13,0	28,0	11,2	1"	24,5
3	M20x1,5	7/16"	13,5	28,0	11,2	1"	24,5
4,8	M20x1,5	1/2"	12,0	31,7	11,2	1"	24,5
6	M20x1,5	9/16"	12,7	32,7	11,2	1"	24,5