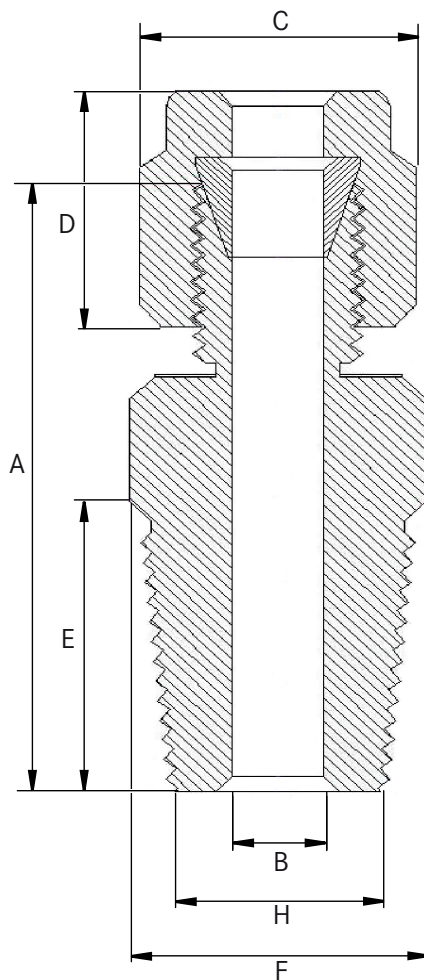


**EPIC® SENSORS NPT MM**

**Compression fitting**

**Features**

- NPT thread is equivalent to BSPT thread
- taper pipe threads
- compression fitting will allow tight process fitting without additional welding process for pipe like structures
- nearest metric equivalent may be used for C and F hex flats
- single ferrule (CPI type) will be used upto 2 mm ØOD tube, from 3 mm ØOD tube and onward double ferrule structure will be used



B [mm] Tube OD	H [in] NPT Thread	C [in] Nut	D [mm]	A [mm]	E [mm]	F [in] Body
1	1/16"	5/16"	8,0	22,0	9,5	8
1	1/8"	5/16"	8,0	22,1	9,6	7/16"
1,5	1/8"	5/16"	8,0	22,1	9,6	7/16"
3	1/8"	7/16"	12,0	23,8	9,6	7/16"
4	1/8"	1/2"	12,0	24,9	9,6	7/16"
4,5	1/8"	1/2"	12,0	24,9	9,6	7/16"
6	1/8"	9/16"	12,7	25,4	9,6	7/16"
3	1/4"	7/16"	12,0	28,9	14,2	9/16"
4	1/4"	1/2"	12,0	29,5	14,2	9/16"
4,5	1/4"	1/2"	12,0	29,5	14,2	9/16"
6	1/4"	9/16"	12,7	30,7	14,2	9/16"
8	1/4"	5/8"	13,5	31,2	14,2	9/16"
3	3/8"	7/16"	12,0	29,5	14,2	11/16"
4	3/8"	1/2"	12,0	30,5	14,2	11/16"
4,5	3/8"	1/2"	12,0	30,5	14,2	11/16"
6	3/8"	9/16"	12,7	31,0	14,2	11/16"
8	3/8"	5/8"	13,5	32,2	14,2	11/16"
3	1/2"	7/16"	12,0	35,5	19,0	7/8"
4	1/2"	1/2"	12,0	36,5	19,0	7/8"
4,5	1/2"	1/2"	12,0	36,5	19,0	7/8"
6	1/2"	9/16"	12,7	37,3	19,0	7/8"
8	1/2"	5/8"	13,5	38,2	19,0	7/8"
10	1/2"	11/16"	14,2	38,7	19,0	7/8"
12	1/2"	7/8"	17,5	38,7	19,0	7/8"
15	1/2"	1"	17,5	38,7	19,0	7/8"
3	3/4"	7/16"	12,0	36,5	19,0	1,1/16"
4	3/4"	1/2"	12,0	37,5	19,0	1,1/16"
4,5	3/4"	1/2"	12,0	37,5	19,0	1,1/16"
6	3/4"	9/16"	12,7	38,6	19,0	1,1/16"
8	3/4"	5/8"	13,5	39,8	19,0	1,1/16"
12	3/4"	7/8"	17,5	40,3	19,0	1,1/16"
15	3/4"	1"	17,5	40,3	19,0	1,1/16"
3	1"	7/16"	12,0	40,9	23,5	1,3/8"
4,5	1"	1/2"	12,0	42,0	23,5	1,3/8"
6	1"	9/16"	12,7	42,0	23,5	1,3/8"