

## EPIC® SENSORS

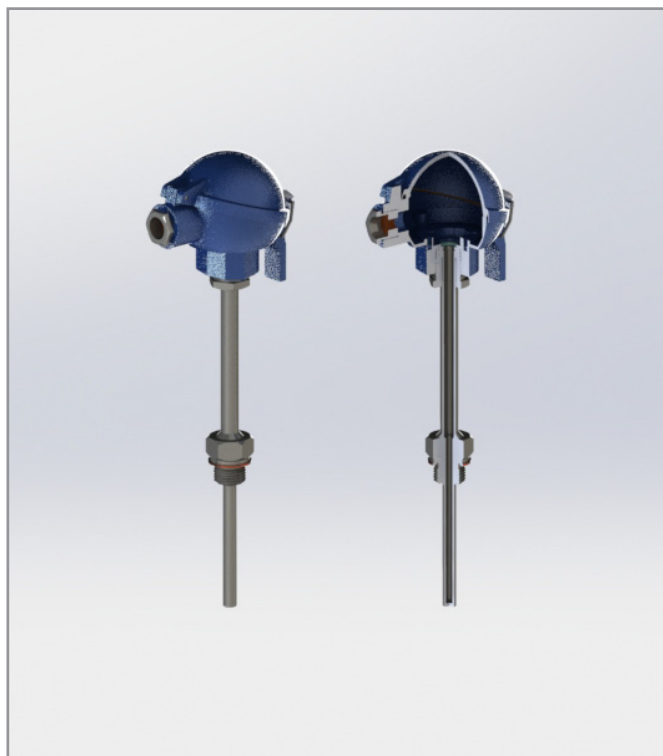
### Threaded thermowells with cooling neck

#### Features

- according to DIN 43772 form 2G
- fitted to application with thread, no welding required
- neck pipe, also known as cooling neck, for heat source clearance
- used in applications where heat sensitive electronics, mainly transmitters, need clearance from heat source
- neck pipe length typically 145 mm
- allows separate insulator layer to be used between connection head and heat source
- thermowell material according to the application
- used to house mineral insulated temperature sensor element
- allows easy replacement of sensor element, without interrupting the process
- gable gland for max Ø14 mm cable
- ATEX compatible Ex db version available
- 3D step models available on request.

#### Typical applications

- energy and power plant technology
- process industry
- chemical industry
- machinery and vessel construction
- manufacturing industry.



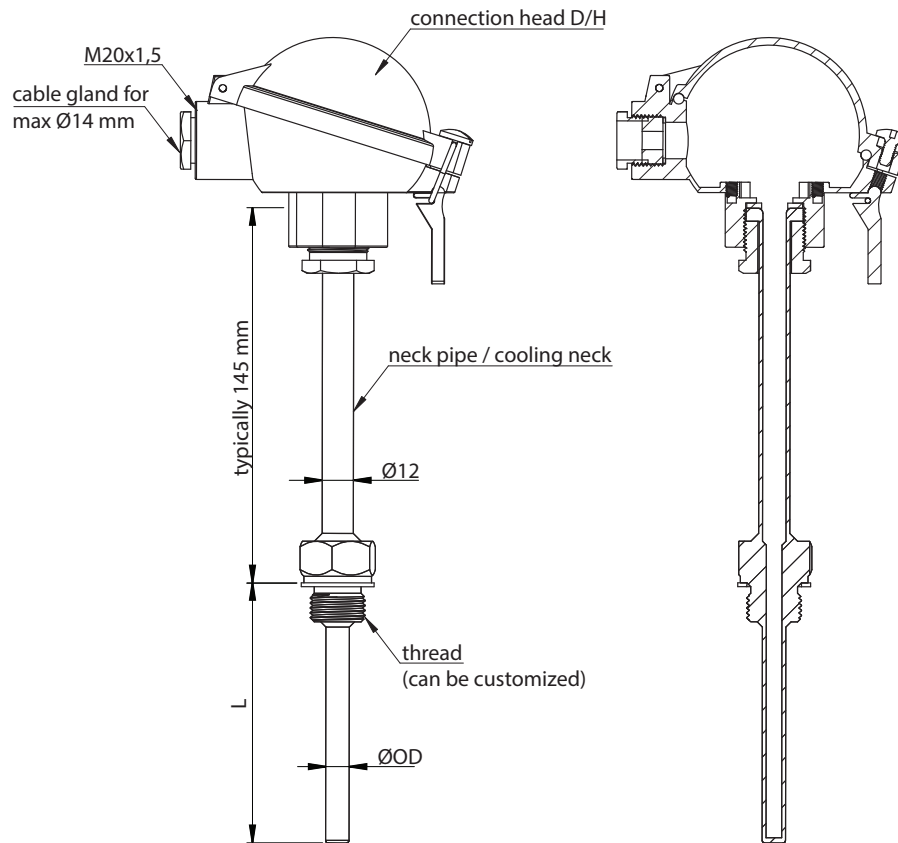
#### Technical data

<b>Materials</b>	AISI 316L, maximum temperature +550 °C, temporarily +600 °C, Other materials on request
<b>Thread</b>	G, R, metric and NPT, Other threads on request
<b>Diameter</b>	Ø6 mm, Ø9 mm or Ø11 mm, Other diameters available on request
<b>Neck pipe diameter</b>	Typically Ø12 mm, Other diameters available on request
<b>Temperature range</b>	Neck pipe length = 250 mm → maximum temperature +750 °C, Neck pipe length = 300 mm → maximum temperature +1000 °C, Neck pipe length = 350 mm → maximum temperature +1200 °C, Note: maximum temperature will be limited by the type of thermocouple insert used
<b>Approvals</b>	ATEX, IECEx
<b>Quality certificate</b>	ISO 9001:2015, ISO 14001:2015 and ISO 45001:2018 issued by DNV
<b>IP rating</b>	IP65, higher IP rating on request

## EPIC® SENSORS

### Threaded thermowells with cooling neck

#### Drawing



#### Product code key

Example code: B — 9 — D/H — 100 — G½" — X

B	= thread in thermowell (constant in code)	↑
6, 9, 11	= thermowell outer diameter (ØOD) [mm] other diameters on request	↑
B	= connection head B	↑
D/H	= connection head with snap lock	↑
D/H/D	= connection head with snap lock and double barrel (2x cable gland)	↑
D/W/H	= high cover connection head with snap lock	↑
D/W/H/D	= high cover connection head with snap lock and double barrel (2x cable gland)	↑
EXD	= ATEX-compatible connection head	↑
HST	= acid proof connection head	↑
N	= connection head N	↑
100	= length, L [mm]	↑
G½"	= thread size (all available, also NPT)	↑
X	= additional details on the text line	↑
		↑
		↑